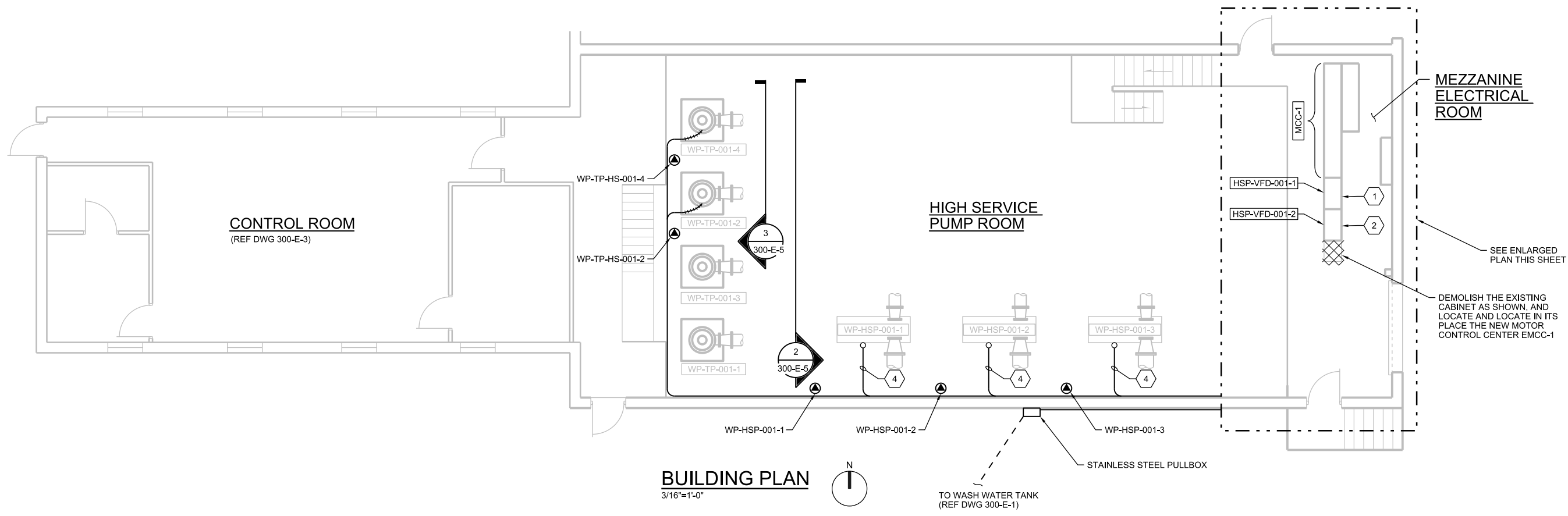


1 2 3 4 5 6

A
B
C
D

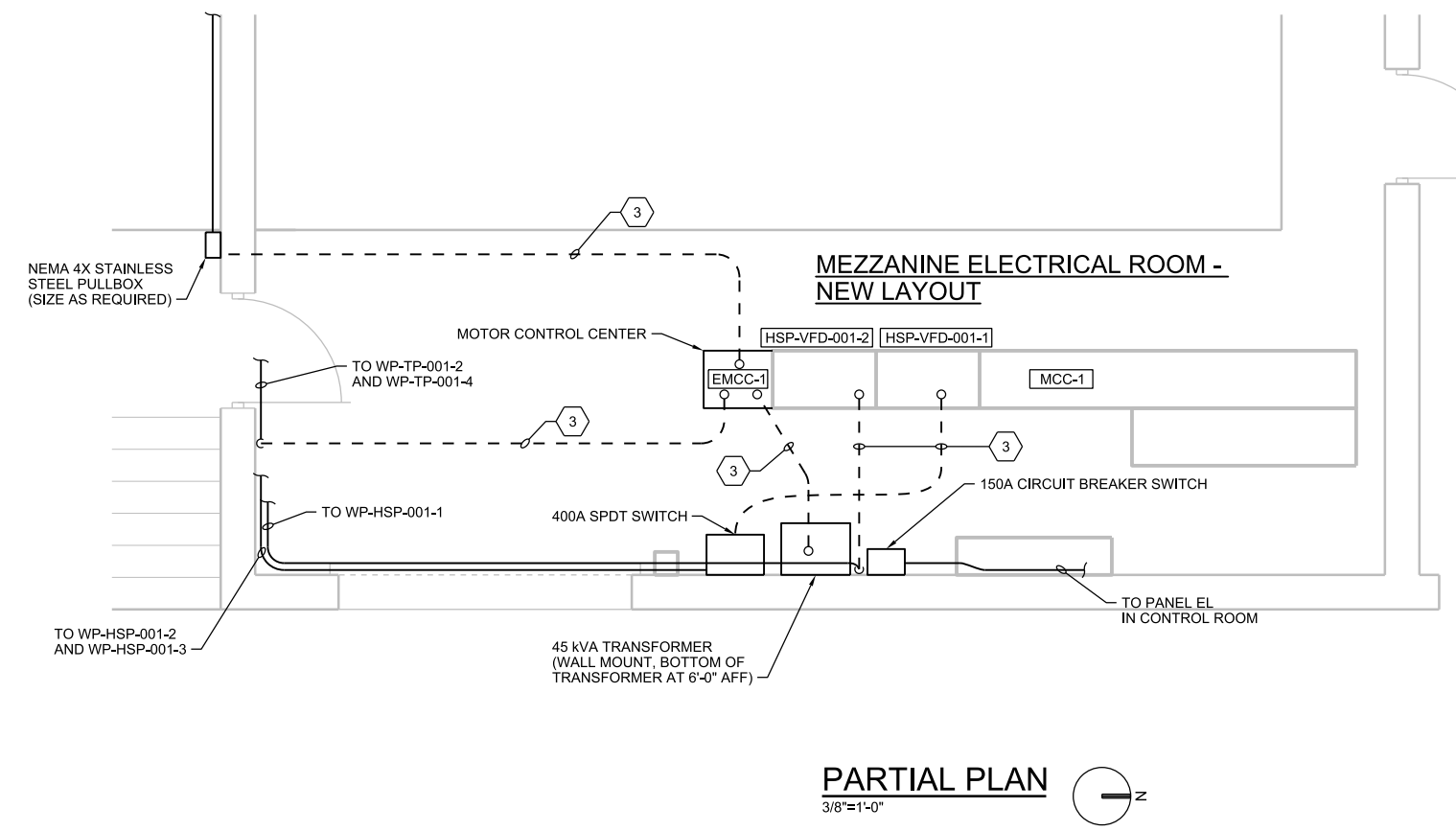


GENERAL NOTES:

1. ALL CONDUIT INSTALLATION SHALL NOT INTERFERE WITH THE OPERATION OF THE OVERHEAD CRANE.

KEYED NOTES:

- 1 EXISTING VFD (HSP-VFD-001-1) TO REMAIN. MODIFY POWER WIRING ON THE LOAD SIDE AS SHOWN ON ONE-LINE DIAGRAM ON DRAWING 300-E-4. REMOVE ALL EXISTING POWER WIRING TO LOAD SIDE OF HSP-VFD-001-1.
- 2 EXISTING VFD (HSP-VFD-001-2) TO BE INSTALLED IN EXISTING CABINET AS SHOWN. PROVIDE POWER WIRINGS TO HSP-VFD-001-2 AS SHOWN ON ONE-LINE DIAGRAM ON DRAWING 300-E-4.
- 3 ROUTE CONDUIT ALONG FIRST FLOOR STORAGE ROOM AND STUB UP TO EQUIPMENT AS SHOWN. CORE DRILL FLOOR FOR CONDUIT STUB UP AS REQUIRED.
- 4 CONDUIT ROUTED ON FLOOR SHALL BE SUPPORTED ON 6" LONG STAINLESS STEEL CHANNEL AND SECURED TO CHANNEL WITH STAINLESS STEEL CONDUIT CLIP.



| NO. | DATE | DR | CHK | REVISION | BY | APVD | S HO |
|-----|------|----|-----|----------|----|------|------|
| | | | | | | | |
| | | | | | | | |
| | | | | | | | |
| | | | | | | | |
| | | | | | | | |
| | | | | | | | |
| | | | | | | | |
| | | | | | | | |
| | | | | | | | |

CH2M Hill Engineers, Inc.
TBPE FIRM NO. 3699

Wastewater Treatment Plant
Water Treatment Plant and Prison Lift Station Improvements
City of Pampa, Texas

ch2m

WTP ELECTRICAL
HIGH SERVICE PUMP ROOM AND MEZZANINE ELECTRICAL ROOM PLAN

| |
|--------------------------------------|
| AS NOTED |
| VERIFY SCALE |
| BAR IS ONE INCH ON ORIGINAL DRAWING. |
| DATE MARCH 2016 |
| PROJ 659681 |
| DWG 300-E-2 |
| SHEET 84 of 125 |

TENDER / BID DOCUMENTS

REUSE OF DOCUMENTS: THIS DOCUMENT, AND THE IDEAS AND DESIGNS INCORPORATED HEREIN, AS AN INSTRUMENT OF PROFESSIONAL SERVICE, IS THE PROPERTY OF CH2M HILL AND IS NOT TO BE USED, IN WHOLE OR IN PART, FOR ANY OTHER PROJECT WITHOUT THE WRITTEN AUTHORIZATION OF CH2M HILL. © CH2M HILL 2014. ALL RIGHTS RESERVED.